

Pneumatic Cloth Chip Suction Device with a Solenoid Valve Air Switch

電磁弁エアスイッチ式切くず集じん装置

MC-35

Pneumatic Cloth Chip Suction Device with a Pedal Connecting Rod Air Switch

ペダル連結棒エアスイッチ式切くず集じん装置

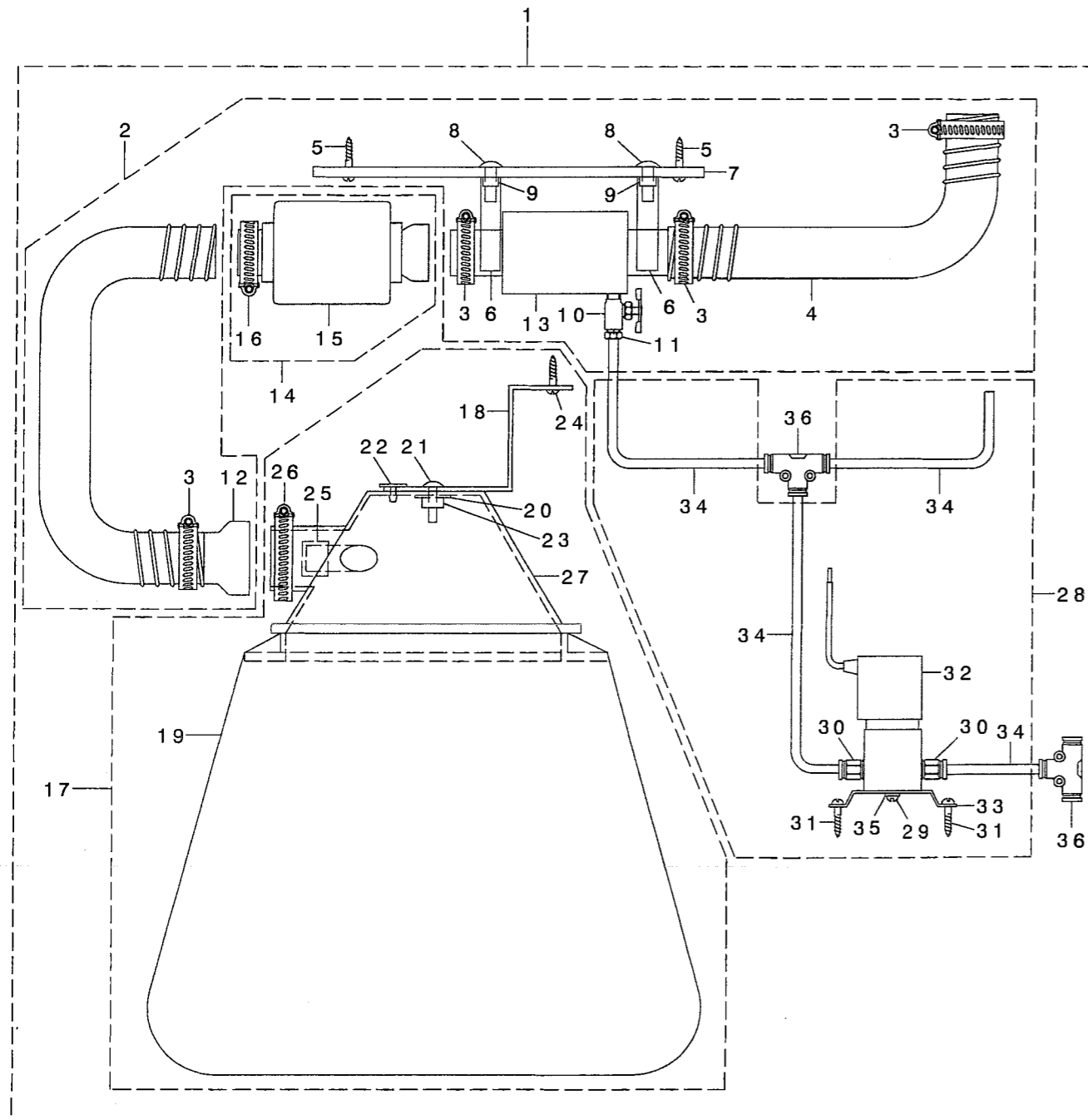
MC-36

PARTS LIST

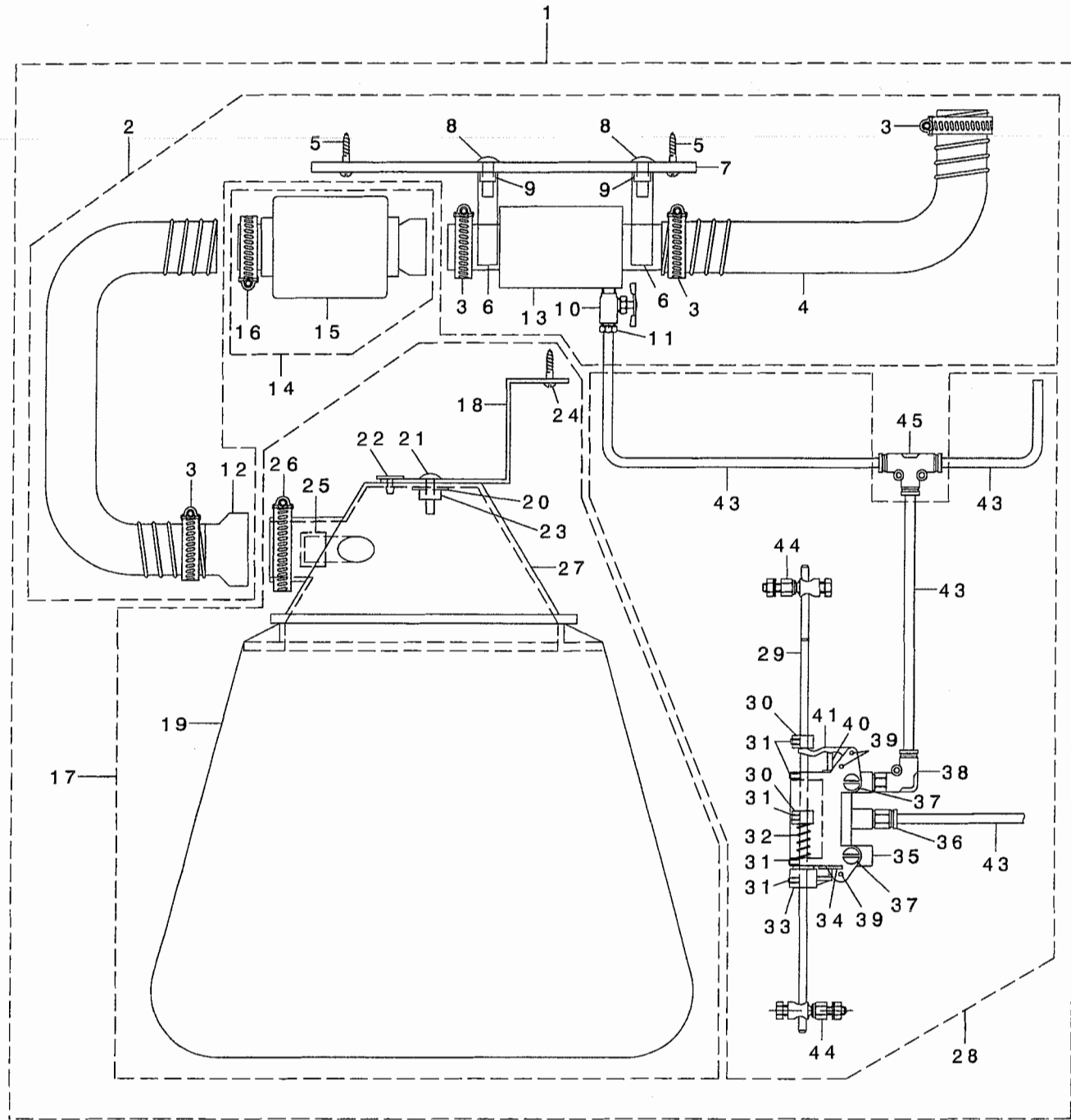
13453105

No.1417-00

MC-35



REF. NO	NOTE	PART NO.	DESCRIPTION	Qty
1		400-23706	MC35	1
2		400-23665	WASTE_REMOVER_ASSY	(1)
3		400-23667	HOSE_CLAMP	(4)
4		400-23668	FLEXIBLE_HOSE	(1)
5		GMC-38013000	SCR TRUSS PHIL TAP	(2)
6		400-23669	TUBE_CLIP	(2)
7		400-23670	MOUNTING_PLATE	(1)
8		400-23671	SCREW	(2)
9		F1033-003-000	NUT	(2)
10		GMC-08016000	NEEDLE_VALVE	(1)
11		400-23692	BRASS_BARB_CONNECTOR	(1)
12		400-23672	REDUCING_ADAPTOR	(1)
13		400-23666	WASTE_REMOVER_BODY	(1)
14		400-23673	MUFFLER_ASSY	(1)
15		400-23674	MUFFLER	(1)
16		400-23667	HOSE_CLAMP	(1)
17		400-23675	WASTE_BAG_ASSY	(1)
18		400-23677	WASTE_BAG_BRACKET	(1)
19		400-23678	WASTE_BAG	(1)
20		400-23679	FENDER_WASHER	(1)
21		400-23680	SCREW	(1)
22		400-23681	PUSH_IN_FASTNER	(1)
23		400-23682	LOCKNUT	(1)
24		400-23683	SCREW_HEX_SLOT_WASHER	(2)
25		400-23684	TUBE_CAP_0.75	(1)
26		GMC-08024000	HOSE_CLAMP	(1)
27		400-23676	WASTE_BAG_HOUSING	(1)
28		400-23701	SOL_VALVE_ASSY	(1)
29		400-23703	SCR_PHIL_PAN	(2)
30		400-23692	BRASS_BARB_CONNECTOR	(2)
31		F1028-003-000	SCREW	(2)
32		400-23704	SOL_VALVE_24V_DC	(1)
33		400-23705	SOL_VALVE_MTG_BKT	(1)
34		400-23699	POLY_TUBING_0.25_6MM	(1)
35		400-23702	INTERNAL_LOCK_WASHER	(2)
36		400-23708	UNION_TEE_AUTO	(2)



REF. NO.	NOTE	PART NO.	DESCRIPTION	QTY
1		400-23707	MC36	1
2		400-23665	WASTE_REMOVER_ASSY	(1)
3		400-23667	HOSE_CLAMP	(4)
4		400-23668	FLEXIBLE_HOSE	(1)
5		GMC-38013000	SCR TRUSS PHIL TAP	(2)
6		400-23669	TUBE_CLIP	(2)
7		400-23670	MOUNTING_PLATE	(1)
8		400-23671	SCREW	(2)
9		F1033-003-000	NUT	(2)
10		GMC-08016000	NEEDLE_VALVE	(1)
11		400-23692	BRASS_BARB_CONNECTOR	(1)
12		400-23672	REDUCING_ADAPTOR	(1)
13		400-23666	WASTE_REMOVER_BODY	(1)
14		400-23673	MUFFLER_ASSY	(1)
15		400-23674	MUFFLER	(1)
16		400-23667	HOSE_CLAMP	(1)
17		400-23675	WASTE_BAG_ASSY	(1)
18		400-23677	WASTE_BAG_BRACKET	(1)
19		400-23678	WASTE_BAG	(1)
20		400-23679	FENDER_WASHER	(1)
21		400-23680	SCREW	(1)
22		400-23681	PUSH_IN_FASTNER	(1)
23		400-23682	LOCKNUT	(1)
24		400-23683	SCREW_HEX_SLOT_WASHER	(2)
25		400-23684	TUBE_CAP_0.75	(1)
26		GMC-08024000	HOSE_CLAMP	(1)
27		400-23676	WASTE_BAG_HOUSING	(1)
28		400-23700	TREADLE_SWITCH_ASSY	(1)
29		GMC-08052000	SHAFT	(2)
30		400-23688	SHAFT_COLLAR_0.25	(2)
31		GMC-08012000	FIXED SCREW 8-32 UNF L=6	(5)
32		GMC-08051000	SPRING	(1)
33		400-23689	VALVE_STEM_DEPRESSOR	(1)
34		400-23690	PLUG_0.625	(1)
35		400-23691	NYLON_VALVE_HOUSING	(1)
36		400-23692	BRASS_BARB_CONNECTOR	(1)
37		400-23693	FLOW_CONTROL_PIN	(2)
38		400-23694	BRASS_EL_BARBED	(1)
39		400-23695	DOWEL_PIN	(3)
40		400-23696	CARTRIDGE_VALVE_3-WAY	(1)
41		400-23697	VALVE_LEVER	(1)
42		400-23698	PUSH_ON_RETAINER_WASHER	(2)
43		400-23699	POLY_TUBING_0.25_6MM	(1)
44		GMC-08005000	BALL_JOINT	(2)
45		400-23708	UNION_TEE_AUTO	(1)

ALL PARTS NOT MENTIONED IN THIS PARTS LIST ARE SAME AS THOSE OF MODEL MF-7800. OTHER PARTS LIST RELATED TO THIS MODEL.

*MF-7800 SERIES(NO.1379 PART NO.13450002)

このパーツリスト記載以外の部品はMF-7800と共通です。

この機種に関連するパーツリストとして下記のパーツリストがあります。

MF-7800シリーズ (NO. 1379 品番13450002)



JUKI 株式会社

〒182-8655 東京都調布市国領町8-2-1
TEL. 03-3480-1111(代表)

営業本部
TEL. 03-3430-4001(ダイヤルイン)

JUKI CORPORATION

INTERNATIONAL SALES H.Q.
8-2-1, KOKURYO-CHO, CHOFU-SHI
TOKYO 182-8655, JAPAN
PHONE: (81)3-3430-4001 to 4005
FAX: (81)3-3430-4909, 4914, 4984
TELEX: J22967

Copyright © 2004 JUKI CORP.
本書の内容を無断で転載、複写することを禁止します。
All rights reserved throughout the world.

お問い合わせ、ご相談は
To order or for further
information,
please contact:

※このパーツリストは商品改良のため予告なく変更する事があります。
* The description covered in this parts list is subject to change for improvement of the commodity without notice.
※このパーツリストは、2004年7月 現在の商品仕様で編集したものです。
* This parts list is edited in accordance with the product specifications as of July 2004.